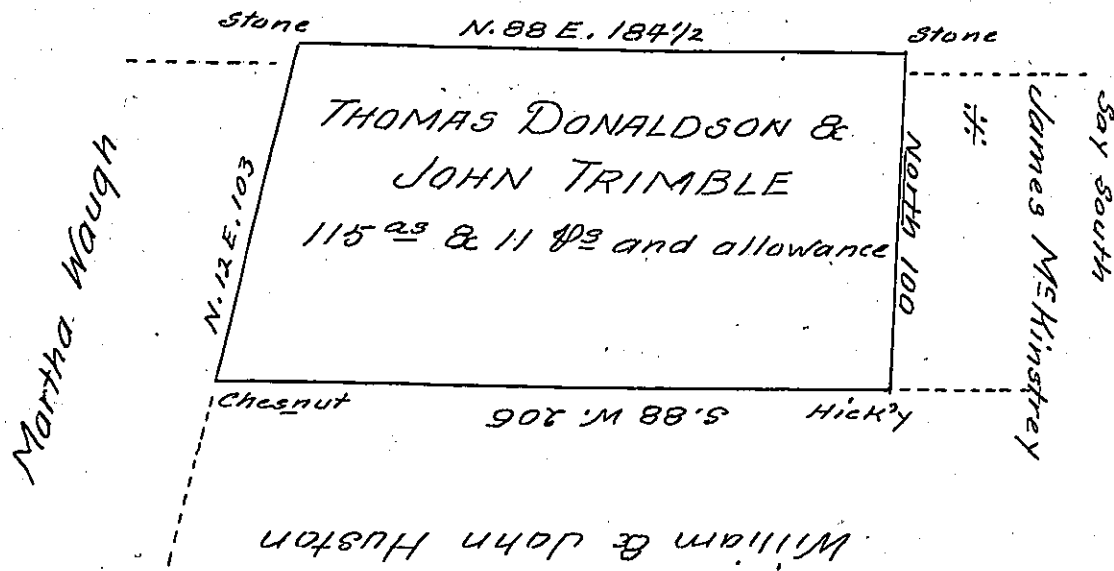


North Mountain



The Draught of a Tract of Land Situate in East Pennsborough Township Cumberland County Containing One hundred and fifteen Acres and 11 Perches and Allowance of Six  $\frac{1}{2}$  Cent for Roads &c<sup>a</sup>, Surveyed January 18<sup>th</sup> 1790 in pursuance of a Warrant granted to Thomas Donaldson and John Trimble Dated December 1<sup>st</sup> 1789

By Sam<sup>l</sup> Lyon D.S.

To Daniel Brodhead Esquire  
Surveyor General of Pennsylvania

IN TESTIMONY that the above is a copy of the original remaining on file in the Department of Internal Affairs of Pennsylvania, made conformably to an Act of Assembly approved the 16th day of February, 1833, I have hereunto set my Hand and caused the Seal of said Department to be affixed at Harrisburg, this fifteenth day of July 1904

*James B. Brown*  
Secretary of Internal Affairs.